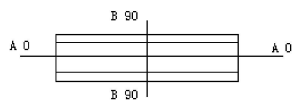
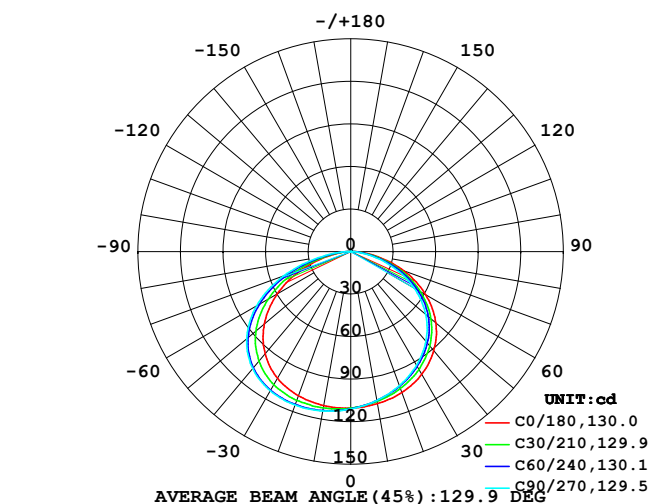


LUMINAIRE PHOTOMETRIC TEST REPORT

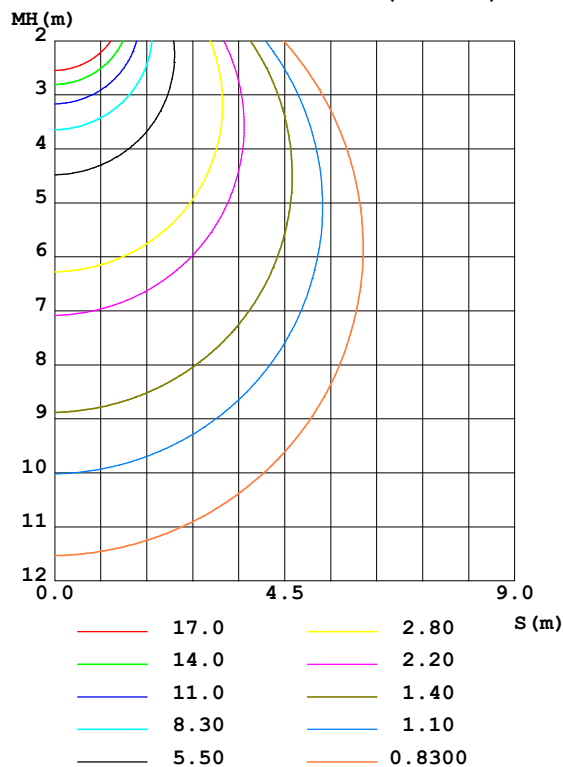
Test:U:24.00V I:0.249A P:5.98W PF:1.000 Freq:0Hz Lamp Flux:373.02lx1 lm		
NAME: 22408-4000R-G	TYPE:	WEIGHT:
SPEC.:	DIM.:	SERIAL No.: 2025123002
MFR.:	SUR.:	Shielding Angle:

DATA OF LAMP		PHOTOMETRIC DATA Eff: 62.42 lm/W			
MODEL		I _{max} (cd)	115.2	S/MH(C0/180)	1.39
NOMINAL POWER(W)		LOR(%)	100.0	S/MH(C90/270)	1.52
RATED VOLTAGE(V)	24	TOTAL FLUX(lm)	373.02	η UP,DN(C0-180)	0.1,45.3
NOMINAL FLUX(lm)	373.021	CIE CLASS	DIRECT	η UP,DN(C180-360)	0.1,54.6
LAMPS INSIDE	1	η up(%)	0.1	CIBSE SHR NOM	1.50
TEST VOLTAGE(V)	24	η down(%)	99.9	CIBSE SHR MAX	1.55

LUMINOUS INTENSITY DISTRIBUTION DIAGRAM



C0 PLANE ISOLUX DIAGRAM (UNIT:lx)



C Range: 0 - 360DEG
C Interval: 15.0DEG
Test Speed: HIGH
Temperature:25DEG
Operators:SENPU
Test Date:2025-12-30

γ Range: 0 - 100DEG
γ Interval: 1.0DEG
Test System:EVERFINE GO-2000B_V1 SYSTEM V2.00.444
Humidity:61%
Test Distance:8.000m [K=1.0000]
Remarks:

ZONAL FLUX DIAGRAM

ZONAL FLUX DIAGRAM:

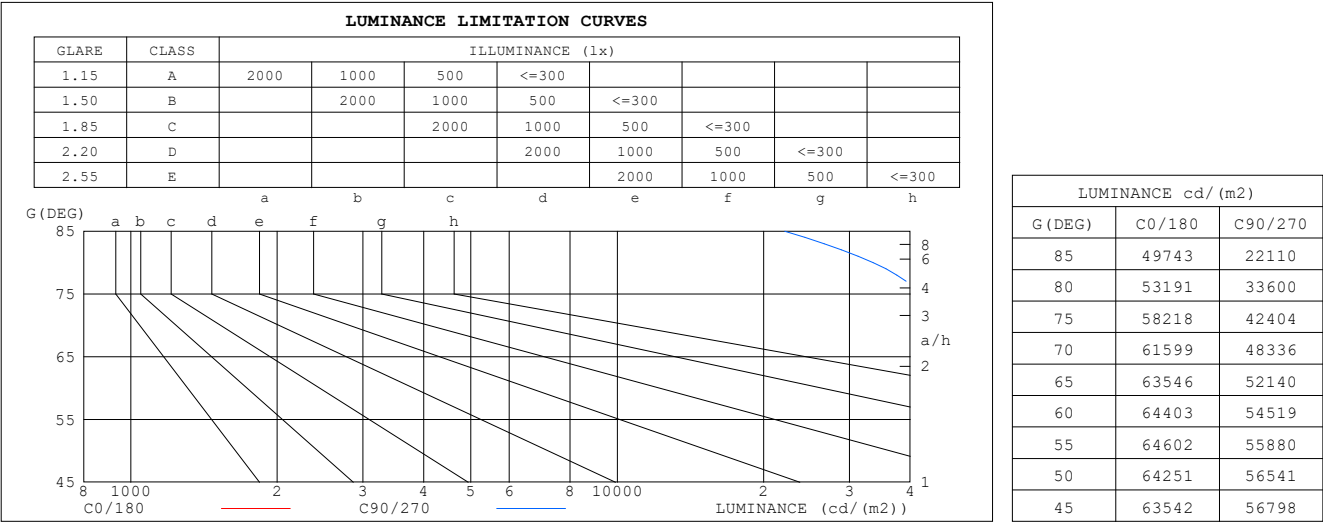
γ	C0	C45	C90	C135	C180	C225	C270	C315	γ	Φ zone	Φ total	%lum,lamp
10	108.9	107.1	106.6	108.0	110.2	113.3	114.1	112.4	0- 10	10.54	10.54	2.83,2.83
20	105.7	102.1	100.6	103.5	108.2	113.9	115.1	112.2	10- 20	30.87	41.41	11.1,11.1
30	100.1	95.22	92.75	96.55	103.2	111.3	113.4	109.1	20- 30	48.72	90.13	24.2,24.2
40	91.14	85.81	82.56	86.35	93.98	104.4	107.7	102.4	30- 40	61.98	152.1	40.8,40.8
50	78.47	73.11	69.05	72.05	79.61	91.30	95.81	90.58	40- 50	68.14	220.3	59,59
60	61.18	56.27	51.79	53.48	59.91	70.67	76.70	72.73	50- 60	64.80	285.1	76.4,76.4
70	40.03	35.68	31.41	31.55	36.08	43.75	50.48	49.03	60- 70	50.94	336.0	90.1,90.1
80	17.55	14.31	11.09	10.76	12.58	15.94	20.80	21.48	70- 80	28.86	364.9	97.8,97.8
90	2.555	1.478	0.1179	0.6104	0.6627	1.078	0.0443	2.875	80- 90	7.700	372.6	99.9,99.9
100	0.1509	0.1331	0.1420	0.1331	0.1243	0.0621	0.0533	0.0976	90-100	0.4579	373.0	100,100
110	0	0	0	0	0	0	0	0	100-110	0.0062	373.0	100,100
120	0	0	0	0	0	0	0	0	110-120	0	373.0	100,100
130	0	0	0	0	0	0	0	0	120-130	0	373.0	100,100
140	0	0	0	0	0	0	0	0	130-140	0	373.0	100,100
150	0	0	0	0	0	0	0	0	140-150	0	373.0	100,100
160	0	0	0	0	0	0	0	0	150-160	0	373.0	100,100
170	0	0	0	0	0	0	0	0	160-170	0	373.0	100,100
180	0	0	0	0	0	0	0	0	170-180	0	373.0	100,100
DEG	LUMINOUS INTENSITY:cd									UNIT:lm		

C Range: 0 - 360DEG
C Interval: 15.0DEG
Test Speed: HIGH
Temperature:25DEG
Operators:SENPU
Test Date:2025-12-30

γ Range: 0 - 100DEG
 γ Interval: 1.0DEG
Test System:EVERFINE GO-2000B_V1 SYSTEM V2.00.444
Humidity:61%
Test Distance:8.000m [K=1.0000]
Remarks:

LUMINANCE LIMITATION CURVES

Test:U:24.00V I:0.249A P:5.98W PF:1.000 Freq:0Hz Lamp Flux:373.02lx1 lm		
NAME: 22408-4000R-G	TYPE:	WEIGHT:
SPEC.:	DIM.:	SERIAL No.: 2025123002
MFR.:	SUR.:	Shielding Angle:



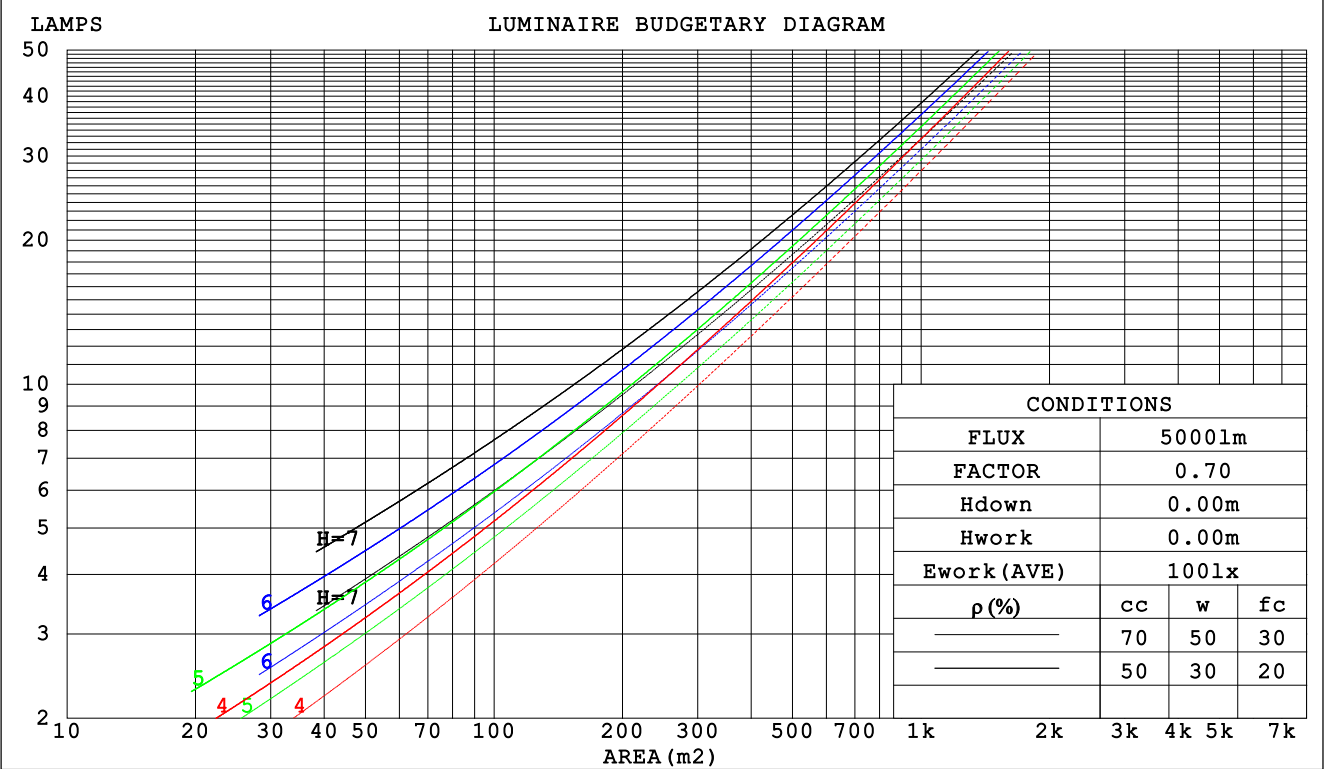
C Range: 0 - 360DEG
C Interval: 15.0DEG
Test Speed: HIGH
Temperature:25DEG
Operators:SENPU
Test Date:2025-12-30

γ Range: 0 - 100DEG
γ Interval: 1.0DEG
Test System:EVERFINE GO-2000B_V1 SYSTEM V2.00.444
Humidity:61%
Test Distance:8.000m [K=1.0000]
Remarks:

CU AND LUMINAIRE BUDGETARY ESTIMATE DIAGRAM

Test:U:24.00V I:0.249A P:5.98W PF:1.000 Freq:0Hz		
Lamp Flux:373.02lx1 lm		
NAME: 22408-4000R-G	TYPE:	WEIGHT:
SPEC.:	DIM.:	SERIAL No.: 2025123002
MFR.:	SUR.:	Shielding Angle:

pcc	80%			70%			50%			30%			10%			0
pw	50%	30%	10%	50%	30%	10%	50%	30%	10%	50%	30%	10%	50%	30%	10%	0
pfc	20%			20%			20%			20%			20%			0
RCR	RCR:Room Cavity Ratio						Coefficients of Utilization(CU)									
0.0	1.19	1.19	1.19	1.16	1.16	1.16	1.11	1.11	1.11	1.06	1.06	1.06	1.02	1.02	1.02	.00
1.0	1.03	.99	.95	1.01	.97	.93	.97	.93	.90	.93	.90	.87	.89	.87	.85	.83
2.0	.89	.82	.76	.87	.81	.75	.84	.78	.73	.80	.76	.72	.77	.74	.70	.68
3.0	.78	.69	.63	.76	.68	.62	.73	.66	.61	.70	.65	.60	.68	.63	.59	.56
4.0	.69	.59	.52	.67	.59	.52	.65	.57	.51	.62	.56	.51	.60	.54	.50	.48
5.0	.61	.52	.45	.60	.51	.44	.58	.50	.44	.56	.49	.43	.54	.48	.43	.41
6.0	.55	.45	.39	.54	.45	.39	.52	.44	.38	.50	.43	.38	.48	.42	.37	.35
7.0	.49	.40	.34	.48	.40	.34	.47	.39	.34	.45	.38	.33	.44	.38	.33	.31
8.0	.45	.36	.30	.44	.36	.30	.43	.35	.30	.41	.35	.30	.40	.34	.29	.27
9.0	.41	.33	.27	.40	.32	.27	.39	.32	.27	.38	.31	.26	.37	.31	.26	.24
10.0	.38	.30	.24	.37	.29	.24	.36	.29	.24	.35	.29	.24	.34	.28	.24	.22



C Range: 0 - 360DEG
C Interval: 15.0DEG
Test Speed: HIGH
Temperature:25DEG
Operators:SENPU
Test Date:2025-12-30

γ Range: 0 - 100DEG
γ Interval: 1.0DEG
Test System:EVERFINE GO-2000B_V1 SYSTEM V2.00.444
Humidity:61%
Test Distance:8.000m [K=1.0000]
Remarks:

WEC AND CCEC

Test:U:24.00V I:0.249A P:5.98W PF:1.000 Freq:0Hz Lamp Flux:373.021x1 lm		
NAME: 22408-4000R-G	TYPE:	WEIGHT:
SPEC.:	DIM.:	SERIAL No.: 2025123002
MFR.:	SUR.:	Shielding Angle:

pcc	80%			70%			50%			30%			10%			0	
pw	50%	30%	10%	50%	30%	10%	50%	30%	10%	50%	30%	10%	50%	30%	10%	0	
pfc	20%			20%			20%			20%			20%			0	
RCR	RCR:Room Cavity Ratio						Wall Exitance Coefficients (WEC)										
0.0																	
1.0	.322	.183	.058	.315	.180	.057	.301	.173	.055	.289	.167	.053	.278	.161	.052		
2.0	.302	.166	.051	.296	.163	.050	.284	.158	.049	.273	.153	.048	.263	.149	.047		
3.0	.279	.149	.045	.274	.147	.044	.263	.143	.043	.253	.139	.043	.244	.135	.042		
4.0	.257	.134	.039	.252	.132	.039	.243	.129	.038	.234	.126	.038	.226	.123	.037		
5.0	.237	.121	.035	.233	.120	.035	.224	.117	.034	.217	.114	.034	.210	.112	.034		
6.0	.219	.110	.031	.216	.109	.031	.208	.107	.031	.201	.105	.031	.195	.103	.030		
7.0	.204	.101	.029	.200	.100	.028	.194	.098	.028	.188	.096	.028	.182	.094	.028		
8.0	.190	.093	.026	.187	.092	.026	.181	.090	.026	.175	.089	.026	.170	.087	.025		
9.0	.178	.086	.024	.175	.085	.024	.170	.084	.024	.165	.083	.024	.160	.081	.023		
10.0	.167	.080	.022	.164	.079	.022	.160	.078	.022	.155	.077	.022	.151	.076	.022		

pcc	80%			70%			50%			30%			10%			0
pw	50%	30%	10%	50%	30%	10%	50%	30%	10%	50%	30%	10%	50%	30%	10%	0
pfc	20%			20%			20%			20%			20%			0
RCR	RCR:Room Cavity Ratio						Ceiling Cavity Exitance Coefficients (CCEC)									
0.0	.191	.191	.191	.164	.164	.164	.112	.112	.112	.064	.064	.064	.021	.021	.021	
1.0	.182	.157	.134	.156	.135	.116	.107	.093	.080	.061	.054	.047	.020	.017	.015	
2.0	.175	.133	.098	.150	.114	.084	.103	.079	.059	.059	.046	.035	.019	.015	.011	
3.0	.167	.115	.074	.143	.099	.064	.098	.069	.045	.057	.040	.027	.018	.013	.009	
4.0	.160	.102	.058	.137	.088	.050	.094	.062	.036	.055	.036	.021	.018	.012	.007	
5.0	.152	.092	.047	.131	.079	.041	.090	.056	.029	.052	.033	.017	.017	.011	.006	
6.0	.145	.084	.039	.125	.072	.034	.086	.051	.024	.050	.030	.014	.016	.010	.005	
7.0	.138	.077	.033	.119	.066	.029	.082	.047	.021	.048	.027	.012	.015	.009	.004	
8.0	.132	.071	.029	.113	.062	.025	.078	.043	.018	.046	.025	.011	.015	.008	.004	
9.0	.126	.066	.026	.108	.057	.022	.075	.040	.016	.044	.024	.010	.014	.008	.003	
10.0	.120	.062	.023	.103	.054	.020	.072	.038	.014	.042	.022	.009	.014	.007	.003	

C Range: 0 - 360DEG
 C Interval: 15.0DEG
 Test Speed: HIGH
 Temperature:25DEG
 Operators:SENPU
 Test Date:2025-12-30

γ Range: 0 - 100DEG
 γ Interval: 1.0DEG
 Test System:EVERFINE GO-2000B_V1 SYSTEM V2.00.444
 Humidity:61%
 Test Distance:8.000m [K=1.0000]
 Remarks:

UGR(Unified Glare Rating) Table

Test:U:24.00V I:0.249A P:5.98W PF:1.000 Freq:0Hz Lamp Flux:373.02lx1 lm										
NAME: 22408-4000R-G					TYPE:			WEIGHT:		
SPEC.:					DIM.:			SERIAL No.: 2025123002		
MFR.:					SUR.:			Shielding Angle:		
ceiling/cavity	0.7	0.7	0.5	0.5	0.3	0.7	0.7	0.5	0.5	0.3
walls	0.5	0.3	0.5	0.3	0.3	0.5	0.3	0.5	0.3	0.3
working plane	0.2	0.2	0.2	0.2	0.2	0.2	0.2	0.2	0.2	0.2
Room dimensions	Viewed crosswise					Viewed endwise				
x = 2H y = 2H	27.2	28.8	27.5	29.0	29.2	26.6	28.2	26.9	28.4	28.6
3H	28.9	30.4	29.2	30.6	30.9	28.1	29.6	28.4	29.8	30.1
4H	29.6	31.0	29.9	31.3	31.5	28.7	30.1	29.0	30.3	30.6
6H	30.1	31.4	30.5	31.7	32.0	29.0	30.3	29.3	30.6	30.8
8H	30.3	31.6	30.7	31.9	32.2	29.0	30.3	29.4	30.6	30.9
12H	30.4	31.6	30.8	31.9	32.2	29.1	30.3	29.4	30.6	30.9
4H 2H	27.8	29.2	28.1	29.4	29.7	27.4	28.7	27.7	29.0	29.3
3H	29.7	30.9	30.0	31.2	31.5	29.0	30.2	29.4	30.5	30.9
4H	30.5	31.6	30.9	31.9	32.3	29.7	30.8	30.1	31.1	31.5
6H	31.1	32.1	31.5	32.5	32.8	30.1	31.1	30.5	31.4	31.8
8H	31.4	32.3	31.8	32.6	33.0	30.2	31.1	30.6	31.5	31.9
12H	31.5	32.4	32.0	32.8	33.2	30.3	31.1	30.7	31.5	31.9
8H 4H	30.7	31.6	31.1	32.0	32.4	30.0	30.9	30.4	31.3	31.7
6H	31.5	32.3	31.9	32.7	33.1	30.6	31.3	31.0	31.7	32.2
8H	31.8	32.5	32.3	32.9	33.4	30.7	31.4	31.2	31.8	32.3
12H	32.1	32.6	32.5	33.1	33.6	30.8	31.4	31.3	31.9	32.3
12H 4H	30.7	31.6	31.1	31.9	32.4	30.0	30.9	30.4	31.3	31.7
6H	31.5	32.2	32.0	32.6	33.1	30.6	31.3	31.1	31.7	32.2
8H	31.9	32.5	32.4	32.9	33.4	30.8	31.4	31.3	31.9	32.4
Variations with the observer position at spacings(CIE Pub.117):										
S = 1.0H	+ 0.1 / - 0.1					+ 0.2 / - 0.2				
1.5H	+ 0.2 / - 0.3					+ 0.2 / - 0.4				
2.0H	+ 0.2 / - 0.3					+ 0.2 / - 0.4				

CIE Pub.117, 373.0 lm Total Lamp Luminous Flux Corrected ($8\log(F/F_0) = -3.4$)
Area: 0.0019 m²

C Range: 0 - 360DEG
C Interval: 15.0DEG
Test Speed: HIGH
Temperature:25DEG
Operators:SENPU
Test Date:2025-12-30

γ Range: 0 - 100DEG
 γ Interval: 1.0DEG
Test System:EVERFINE GO-2000B_V1 SYSTEM V2.00.444
Humidity:61%
Test Distance:8.000m [K=1.0000]
Remarks:

UTILIZATION FACTORS TABLE

Test:U:24.00V I:0.249A P:5.98W PF:1.000 Freq:0Hz Lamp Flux:373.02lx1 lm		
NAME: 22408-4000R-G	TYPE:	WEIGHT:
SPEC.:	DIM.:	SERIAL No.: 2025123002
MFR.:	SUR.:	Shielding Angle:

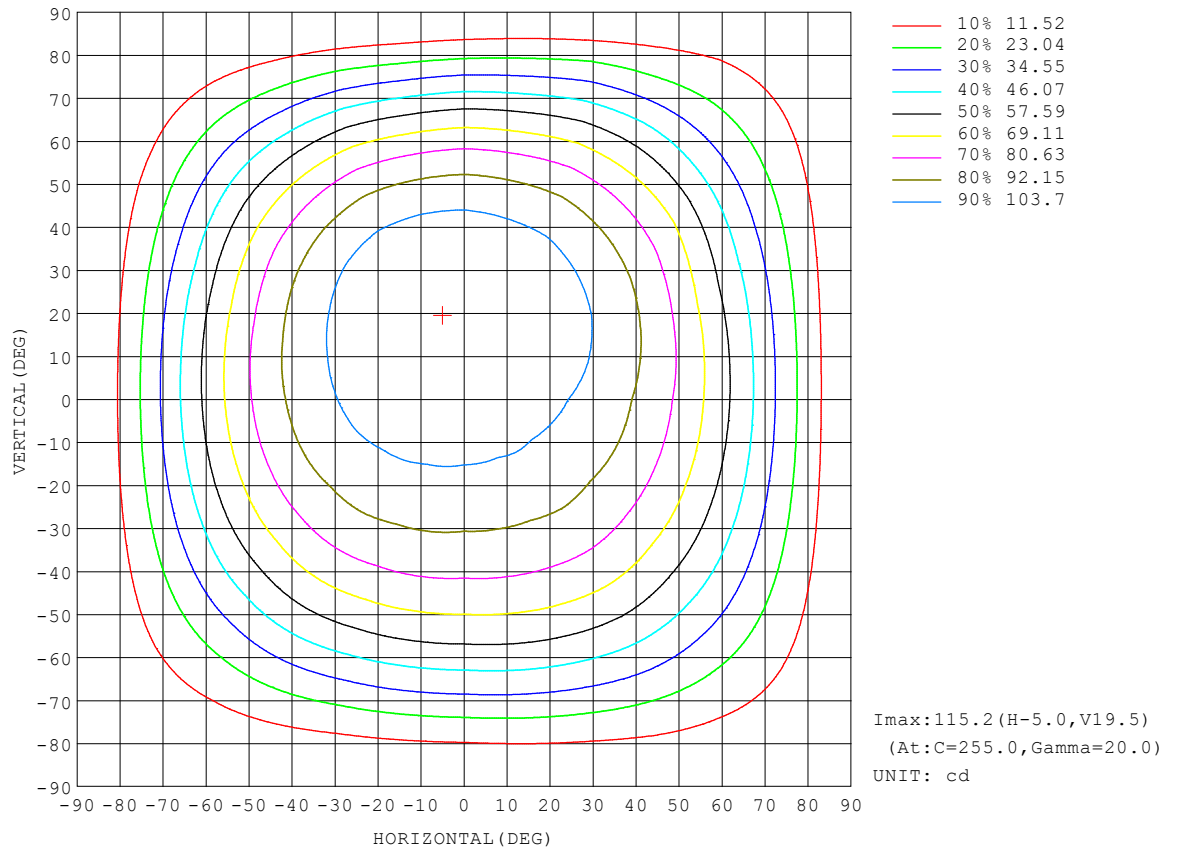
REFLECTANCE										
Ceiling	0.8	0.8	0.8	0.7	0.7	0.7	0.5	0.5	0.5	0
Walls	0.7	0.5	0.3	0.7	0.5	0.3	0.7	0.5	0.3	0
Working plane	0.2	0.2	0.2	0.2	0.2	0.2	0.2	0.2	0.2	0
ROOM INDEX	UTILIZATION FACTORS (PERCENT) $k(RI) \times RCR = 5$									
$k = 0.60$	55	43	36	54	43	36	53	42	36	29
0.80	65	53	46	64	53	45	62	52	45	38
1.00	74	62	55	73	62	55	70	63	54	47
1.25	81	70	63	80	70	62	77	68	62	54
1.50	86	76	69	85	75	68	82	73	67	59
2.00	94	85	78	92	83	77	88	81	76	68
2.50	98	90	83	96	88	82	92	86	81	72
3.00	101	94	88	99	93	87	95	90	85	76
4.00	106	100	95	103	98	93	99	94	91	82
5.00	108	103	99	106	101	97	101	97	94	85
ROOM INDEX	UF (total)									Direct
According to DIN EN 13032-2 2004			Suspended					SHRNOM = 1.25		

C Range: 0 - 360DEG
 C Interval: 15.0DEG
 Test Speed: HIGH
 Temperature: 25DEG
 Operators: SENPU
 Test Date: 2025-12-30

γ Range: 0 - 100DEG
 γ Interval: 1.0DEG
 Test System: EVERFINE GO-2000B_V1 SYSTEM V2.00.444
 Humidity: 61%
 Test Distance: 8.000m [K=1.0000]
 Remarks:

ISOCANDELA DIAGRAM

Test:U:24.00V I:0.249A P:5.98W PF:1.000 Freq:0Hz Lamp Flux:373.02lx1 lm		
NAME: 22408-4000R-G	TYPE:	WEIGHT:
SPEC.:	DIM.:	SERIAL No.: 2025123002
MFR.:	SUR.:	Shielding Angle:

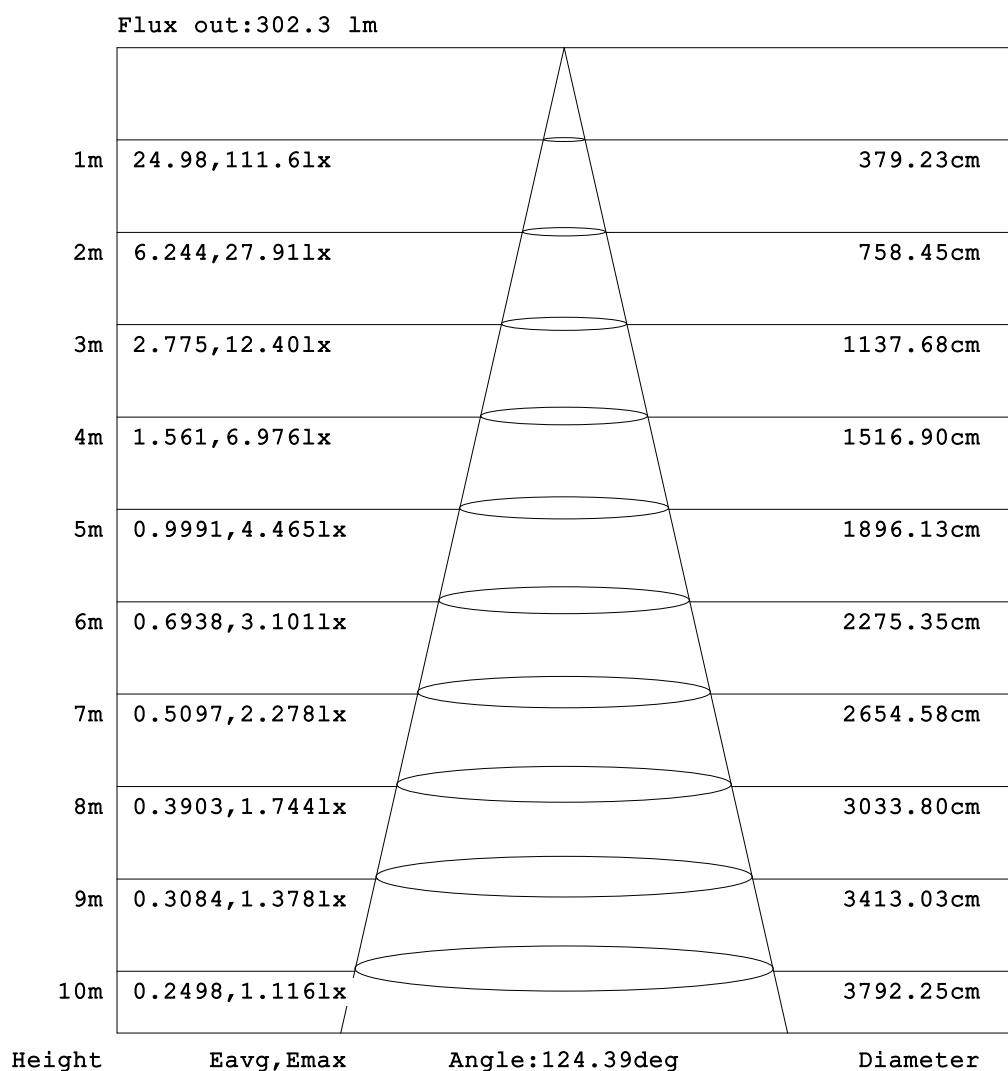


C Range: 0 - 360DEG
C Interval: 15.0DEG
Test Speed: HIGH
Temperature:25DEG
Operators:SENPU
Test Date:2025-12-30

γ Range: 0 - 100DEG
 γ Interval: 1.0DEG
Test System:EVERFINE GO-2000B_V1 SYSTEM V2.00.444
Humidity:61%
Test Distance:8.000m [K=1.0000]
Remarks:

AAI Figure

Test:U:24.00V I:0.249A P:5.98W PF:1.000 Freq:0Hz Lamp Flux:373.021x1 lm		
NAME: 22408-4000R-G	TYPE:	WEIGHT:
SPEC.:	DIM.:	SERIAL No.: 2025123002
MFR.:	SUR.:	Shielding Angle:



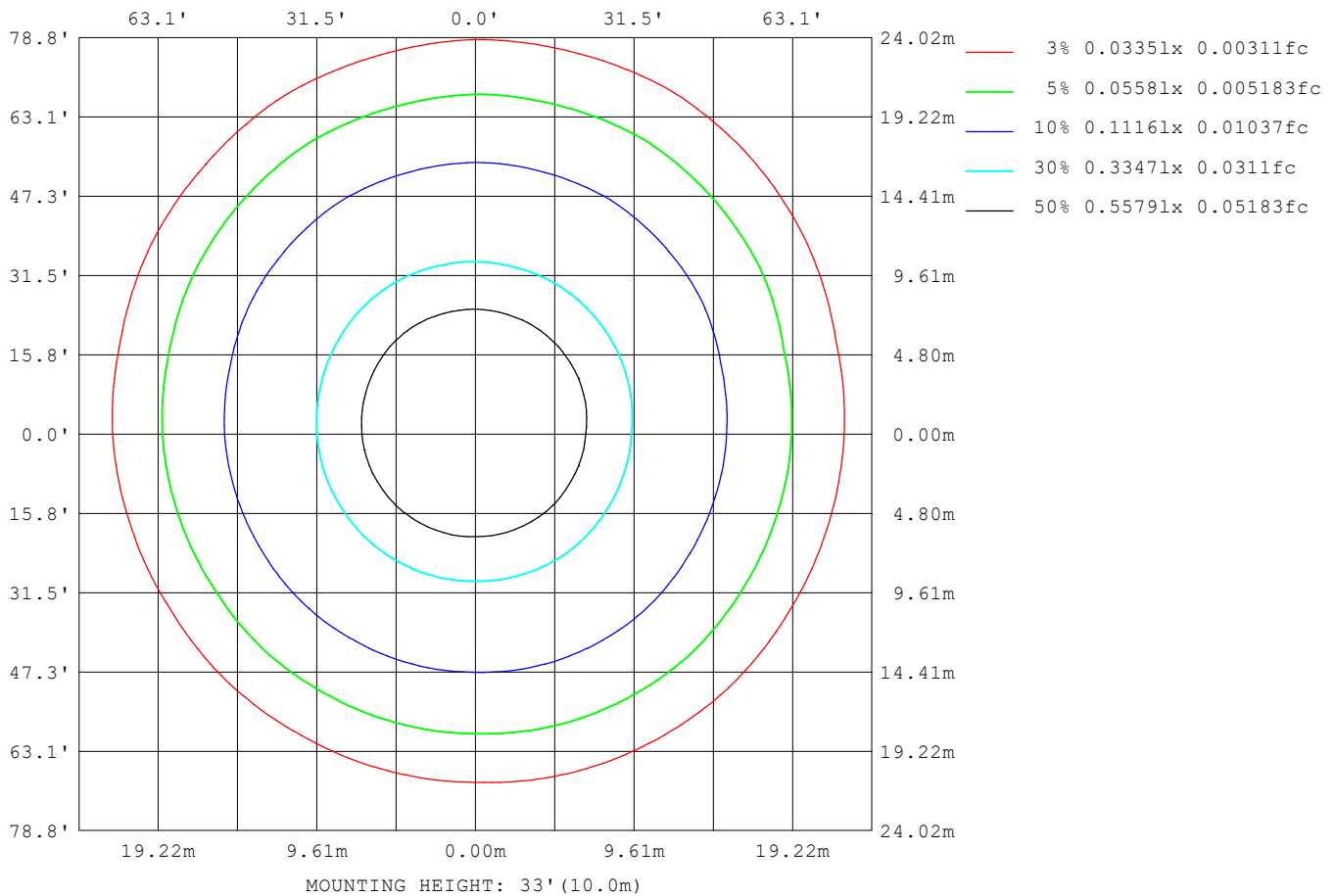
Note:The Curves indicate the illuminated area and the average illumination when the luminaire is at different distance.

C Range: 0 - 360DEG
C Interval: 15.0DEG
Test Speed: HIGH
Temperature:25DEG
Operators:SENPU
Test Date:2025-12-30

γ Range: 0 - 100DEG
γ Interval: 1.0DEG
Test System:EVERFINE GO-2000B_V1 SYSTEM V2.00.444
Humidity:61%
Test Distance:8.000m [K=1.0000]
Remarks:

ISOLUX DIAGRAM

Test:U:24.00V I:0.249A P:5.98W PF:1.000 Freq:0Hz Lamp Flux:373.02lx 1m		
NAME: 22408-4000R-G	TYPE:	WEIGHT:
SPEC.:	DIM.:	SERIAL No.: 2025123002
MFR.:	SUR.:	Shielding Angle:



C Range: 0 - 360DEG
C Interval: 15.0DEG
Test Speed: HIGH
Temperature: 25DEG
Operators: SENPU
Test Date: 2025-12-30

γ Range: 0 - 100DEG
 γ Interval: 1.0DEG
Test System: EVERFINE GO-2000B_V1 SYSTEM V2.00.444
Humidity: 61%
Test Distance: 8.000m [K=1.0000]
Remarks:

LED Avg.L Report

Test:U:24.00V I:0.249A P:5.98W PF:1.000 Freq:0Hz Lamp Flux:373.02lx1 lm		
NAME: 22408-4000R-G	TYPE:	WEIGHT:
SPEC.:	DIM.:	SERIAL No.: 2025123002
MFR.:	SUR.:	Shielding Angle:

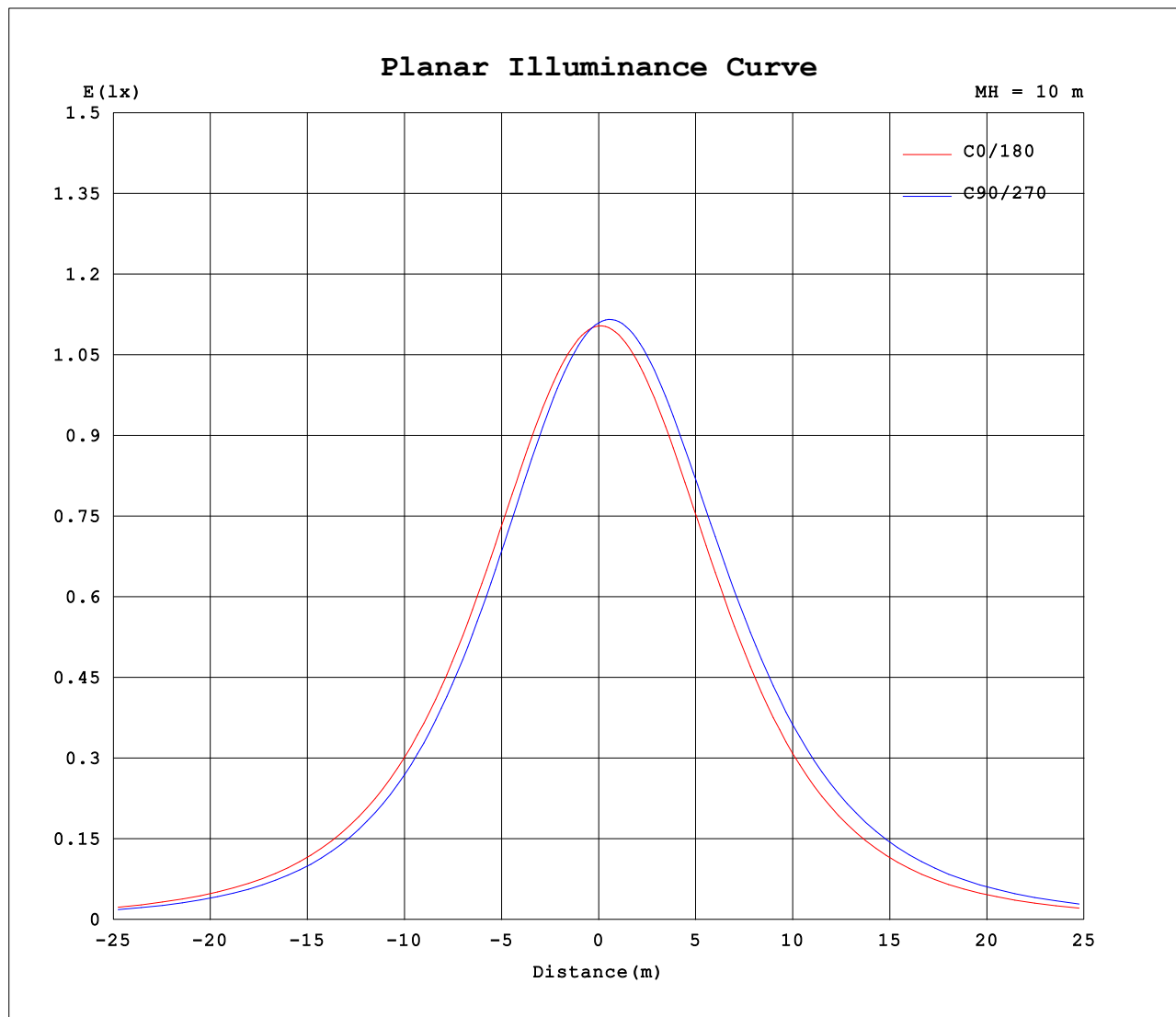
AvgL	cd/m2
L_0~180 (65) av	61913
L_0~180 (75) av	53250
L_0~180 (85) av	38897
L_90~270 (65) av	66172
L_90~270 (75) av	57455
L_90~270 (85) av	36358
L_45 (65) av	64891
L_45 (75) av	55783
L_45 (85) av	38661

Standard: GB/T 29293-2012

C Range: 0 - 360DEG
C Interval: 15.0DEG
Test Speed: HIGH
Temperature:25DEG
Operators:SENPU
Test Date:2025-12-30

γ Range: 0 - 100DEG
γ Interval: 1.0DEG
Test System:EVERFINE GO-2000B_V1 SYSTEM V2.00.444
Humidity:61%
Test Distance:8.000m [K=1.0000]
Remarks:

Planar Illuminance Curve



C Range: 0 - 360DEG
C Interval: 15.0DEG
Test Speed: HIGH
Temperature: 25DEG
Operators: SENPU
Test Date: 2025-12-30

γ Range: 0 - 100DEG
 γ Interval: 1.0DEG
Test System: EVERFINE GO-2000B_V1 SYSTEM V2.00.444
Humidity: 61%
Test Distance: 8.000m [K=1.0000]
Remarks:

LUMINOUS DISTRIBUTION INTENSITY DATA

Test:U:24.00V I:0.249A P:5.98W PF:1.000 Freq:0Hz Lamp Flux:373.021x1 lm		
NAME: 22408-4000R-G	TYPE:	WEIGHT:
SPEC.:	DIM.:	SERIAL No.: 2025123002
MFR.:	SUR.:	Shielding Angle:

Table--1

UNIT: cd

C (DEG) γ (DEG)	0	15	30	45	60	75	90	105	120	135	150	165	180	195	210	225	240	255	270
0	110	110	110	111	111	111	111	111	111	111	111	111	110	110	110	111	111	111	111
5	110	109	109	109	109	109	109	109	109	110	110	111	111	111	111	112	113	113	113
10	109	108	107	107	107	107	107	107	107	108	109	110	110	111	112	113	114	114	114
15	108	106	105	105	104	104	104	104	105	106	107	109	109	111	112	114	115	115	115
20	106	104	103	102	101	101	101	101	102	103	105	107	108	110	112	114	115	115	115
25	103	101	99.7	98.9	97.6	97.1	97.0	97.7	98.7	100	102	104	106	108	110	113	114	115	115
30	100	98.0	96.1	95.2	93.6	93.1	92.7	93.6	94.6	96.5	98.3	101	103	106	108	111	113	114	113
35	96.0	93.9	91.7	90.9	89.2	88.6	88.0	88.8	89.8	92.0	93.8	96.7	99.2	102	105	109	111	111	111
40	91.1	88.8	86.8	85.8	84.1	83.3	82.6	83.2	84.3	86.3	88.3	91.2	94.0	97.1	101	104	107	108	108
45	85.4	82.8	80.9	79.9	78.3	77.1	76.3	76.8	77.8	79.7	81.5	84.4	87.4	90.8	94.8	98.8	102	102	103
50	78.5	75.8	73.9	73.1	71.5	70.1	69.1	69.4	70.2	72.1	73.6	76.4	79.6	82.8	87.4	91.3	94.5	95.3	95.8
55	70.4	67.9	66.0	65.2	63.6	62.2	60.9	61.1	61.7	63.3	64.5	67.2	70.4	73.3	78.1	81.9	85.5	86.3	87.2
60	61.2	58.8	56.9	56.3	54.7	53.2	51.8	51.8	52.1	53.5	54.4	56.9	59.9	62.6	67.1	70.7	74.5	75.3	76.7
65	51.0	48.8	47.1	46.3	44.8	43.4	41.9	41.7	41.7	42.8	43.4	45.6	48.4	50.4	54.8	57.8	61.5	62.4	64.4
70	40.0	38.1	36.5	35.7	34.2	32.9	31.4	31.1	30.8	31.5	32.0	33.8	36.1	37.7	41.3	43.7	47.1	48.4	50.5
75	28.6	27.0	25.6	24.7	23.3	22.2	20.9	20.4	20.0	20.5	20.8	22.2	23.7	25.0	27.5	29.4	32.2	33.4	35.7
80	17.5	16.3	15.2	14.3	13.1	12.2	11.1	10.7	10.3	10.8	11.0	12.1	12.6	13.2	14.8	15.9	17.8	18.8	20.8
85	8.24	7.58	6.68	6.05	5.08	4.41	3.66	3.55	3.40	3.76	4.01	4.67	4.65	4.87	5.61	5.84	6.58	7.08	8.38
90	2.56	2.23	1.95	1.48	1.09	0.60	0.12	0.39	0.54	0.61	0.78	0.85	0.66	0.79	0.91	1.08	1.17	1.17	0.04
95	0.59	0.38	0.37	0.20	0.17	0.12	0.12	0.12	0.16	0.13	0.24	0.22	0.12	0.13	0.08	0.17	0.17	0.14	0.04
100	0.15	0.13	0.13	0.13	0.13	0.14	0.14	0.12	0.13	0.13	0.18	0.16	0.12	0.10	0.11	0.06	0.06	0.05	0.05
105	0.00	0.00	0.00	0.00	0.00	0.00	0.00	0.00	0.00	0.00	0.00	0.00	0.00	0.00	0.00	0.00	0.00	0.00	0.00
110	0.00	0.00	0.00	0.00	0.00	0.00	0.00	0.00	0.00	0.00	0.00	0.00	0.00	0.00	0.00	0.00	0.00	0.00	0.00
115	0.00	0.00	0.00	0.00	0.00	0.00	0.00	0.00	0.00	0.00	0.00	0.00	0.00	0.00	0.00	0.00	0.00	0.00	0.00
120	0.00	0.00	0.00	0.00	0.00	0.00	0.00	0.00	0.00	0.00	0.00	0.00	0.00	0.00	0.00	0.00	0.00	0.00	0.00
125	0.00	0.00	0.00	0.00	0.00	0.00	0.00	0.00	0.00	0.00	0.00	0.00	0.00	0.00	0.00	0.00	0.00	0.00	0.00
130	0.00	0.00	0.00	0.00	0.00	0.00	0.00	0.00	0.00	0.00	0.00	0.00	0.00	0.00	0.00	0.00	0.00	0.00	0.00
135	0.00	0.00	0.00	0.00	0.00	0.00	0.00	0.00	0.00	0.00	0.00	0.00	0.00	0.00	0.00	0.00	0.00	0.00	0.00
140	0.00	0.00	0.00	0.00	0.00	0.00	0.00	0.00	0.00	0.00	0.00	0.00	0.00	0.00	0.00	0.00	0.00	0.00	0.00
145	0.00	0.00	0.00	0.00	0.00	0.00	0.00	0.00	0.00	0.00	0.00	0.00	0.00	0.00	0.00	0.00	0.00	0.00	0.00
150	0.00	0.00	0.00	0.00	0.00	0.00	0.00	0.00	0.00	0.00	0.00	0.00	0.00	0.00	0.00	0.00	0.00	0.00	0.00
155	0.00	0.00	0.00	0.00	0.00	0.00	0.00	0.00	0.00	0.00	0.00	0.00	0.00	0.00	0.00	0.00	0.00	0.00	0.00
160	0.00	0.00	0.00	0.00	0.00	0.00	0.00	0.00	0.00	0.00	0.00	0.00	0.00	0.00	0.00	0.00	0.00	0.00	0.00
165	0.00	0.00	0.00	0.00	0.00	0.00	0.00	0.00	0.00	0.00	0.00	0.00	0.00	0.00	0.00	0.00	0.00	0.00	0.00
170	0.00	0.00	0.00	0.00	0.00	0.00	0.00	0.00	0.00	0.00	0.00	0.00	0.00	0.00	0.00	0.00	0.00	0.00	0.00
175	0.00	0.00	0.00	0.00	0.00	0.00	0.00	0.00	0.00	0.00	0.00	0.00	0.00	0.00	0.00	0.00	0.00	0.00	0.00
180	0.00	0.00	0.00	0.00	0.00	0.00	0.00	0.00	0.00	0.00	0.00	0.00	0.00	0.00	0.00	0.00	0.00	0.00	0.00

C Range: 0 - 360DEG
C Interval: 15.0DEG
Test Speed: HIGH
Temperature:25DEG
Operators:SENPU
Test Date:2025-12-30

γ Range: 0 - 100DEG
γ Interval: 1.0DEG
Test System:EVERFINE GO-2000B_V1 SYSTEM V2.00.444
Humidity:61%
Test Distance:8.000m [K=1.0000]
Remarks:

LUMINOUS DISTRIBUTION INTENSITY DATA

Test:U:24.00V I:0.249A P:5.98W PF:1.000 Freq:0Hz Lamp Flux:373.02lx1 lm		
NAME: 22408-4000R-G	TYPE:	WEIGHT:
SPEC.:	DIM.:	SERIAL No.: 2025123002
MFR.:	SUR.:	Shielding Angle:

Table--2

UNIT: cd

γ (DEG)	C (DEG)																		
	285	300	315	330	345														
0	111	111	111	111	111														
5	113	112	112	112	111														
10	114	113	112	112	111														
15	114	114	113	111	110														
20	115	114	112	110	108														
25	114	113	111	109	106														
30	112	111	109	107	104														
35	110	109	106	104	100.0														
40	106	105	102	99.4	95.4														
45	101	100	97.2	93.9	89.7														
50	94.7	93.8	90.6	87.2	82.5														
55	86.3	85.6	82.4	79.2	73.4														
60	76.0	75.8	72.7	69.7	63.2														
65	64.0	64.3	61.5	57.9	52.8														
70	50.6	51.3	49.0	45.1	41.7														
75	36.2	37.3	35.2	32.6	30.3														
80	21.9	23.2	21.5	20.6	19.0														
85	9.41	9.88	9.96	10.3	9.47														
90	1.06	1.88	2.87	3.35	3.38														
95	0.11	0.27	0.63	0.82	1.08														
100	0.06	0.07	0.10	0.11	0.16														
105	0.00	0.00	0.00	0.00	0.00														
110	0.00	0.00	0.00	0.00	0.00														
115	0.00	0.00	0.00	0.00	0.00														
120	0.00	0.00	0.00	0.00	0.00														
125	0.00	0.00	0.00	0.00	0.00														
130	0.00	0.00	0.00	0.00	0.00														
135	0.00	0.00	0.00	0.00	0.00														
140	0.00	0.00	0.00	0.00	0.00														
145	0.00	0.00	0.00	0.00	0.00														
150	0.00	0.00	0.00	0.00	0.00														
155	0.00	0.00	0.00	0.00	0.00														
160	0.00	0.00	0.00	0.00	0.00														
165	0.00	0.00	0.00	0.00	0.00														
170	0.00	0.00	0.00	0.00	0.00														
175	0.00	0.00	0.00	0.00	0.00														
180	0.00	0.00	0.00	0.00	0.00														

C Range: 0 - 360DEG
 C Interval: 15.0DEG
 Test Speed: HIGH
 Temperature:25DEG
 Operators:SENPU
 Test Date:2025-12-30

γ Range: 0 - 100DEG
 γ Interval: 1.0DEG
 Test System:EVERFINE GO-2000B_V1 SYSTEM V2.00.444
 Humidity:61%
 Test Distance:8.000m [K=1.0000]
 Remarks: